

FEATURES

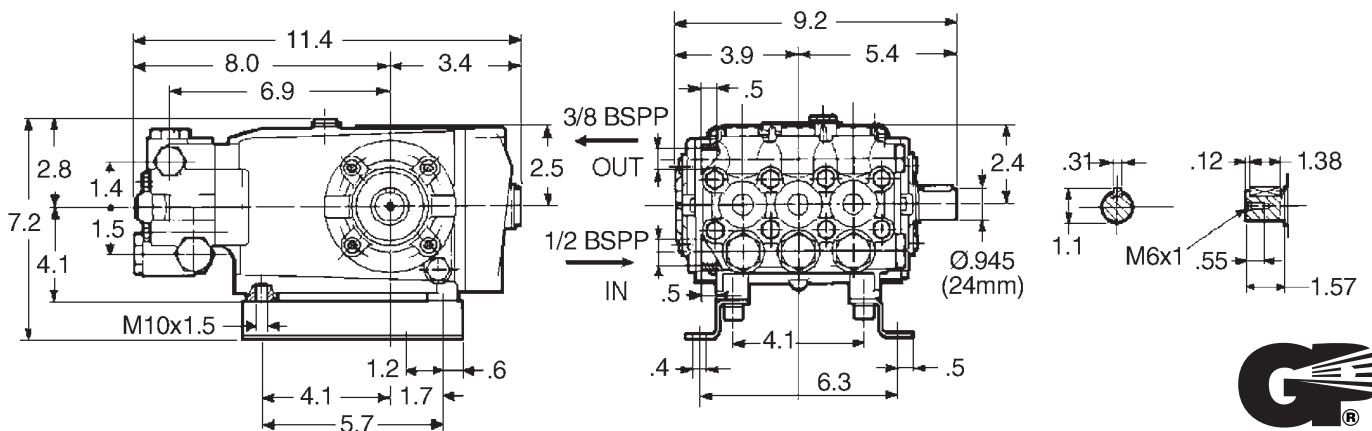
- The preferred pump frame in the car wash self-service industry
- Forged brass manifold with an exclusive lifetime warranty
- Large-capacity, die-cast, anodized aluminum oil-bath crankcase
- Over-sized connecting rods for maximum life
- Heavy-duty tapered roller bearing.
- Solid ceramic plungers with continuously lubricated packings
- Unitized stainless steel inlet and discharge valves
- Available in left-handed “L” version

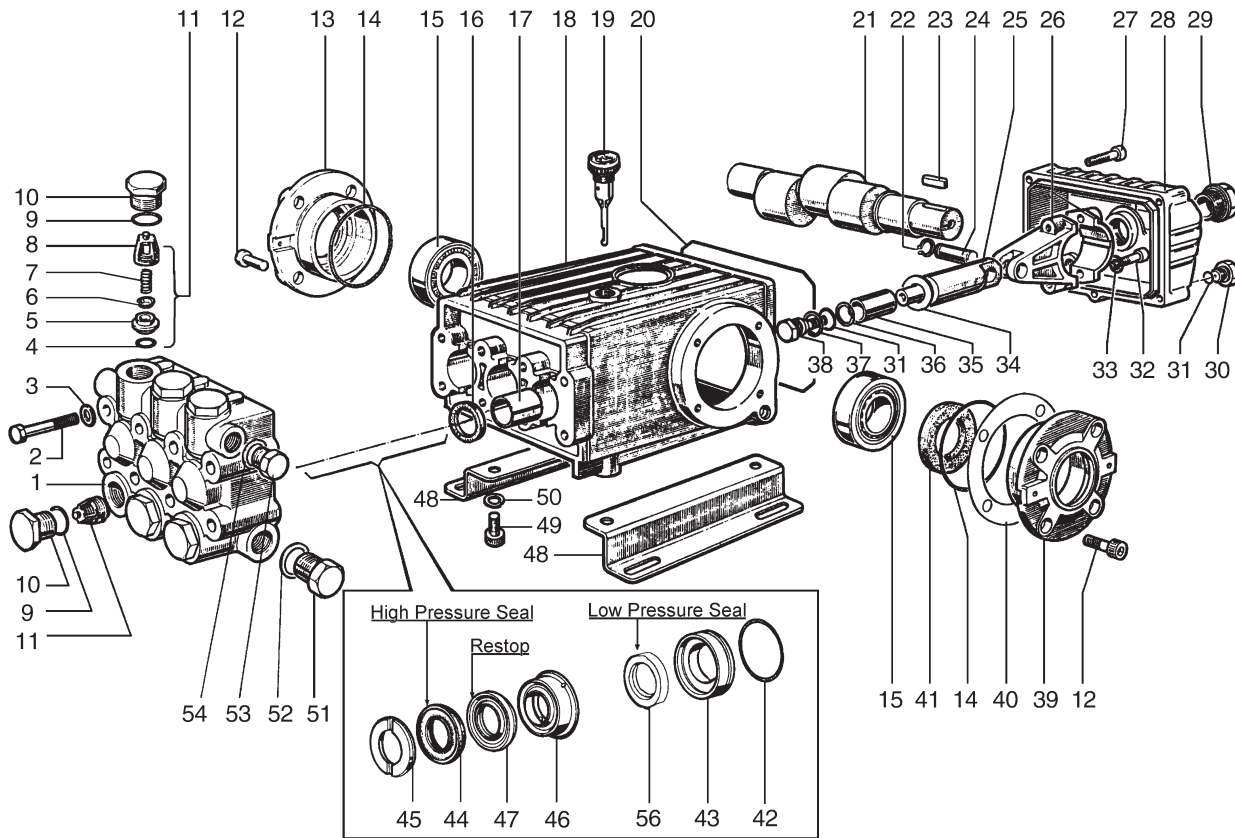


SPECIFICATIONS

| Pump Model | CW2004 |
|-------------------------|----------------------|
| Maximum Volume | 4.0 GPM |
| Max. Discharge Pressure | 2000 PSI |
| Maximum Pump Speed | 1750 RPM |
| Maximum Inlet Pressure | 125 PSI |
| Bore | .787 in. / 20 mm |
| Stroke | .630 in. / 16 mm |
| Crankcase Oil Capacity | 33.8 oz. |
| Maximum Fluid Temp. | 165°F |
| Inlet Port Thread | 1/2-14 BSPP-F |
| Discharge Port Thread | 3/8-19 BSPP-F |
| Shaft Diameter. | .945 in. / 24 mm |
| Weight | 30 lbs. |
| Dimensions | 11.4 x 9.2 x 7.2 in. |

DIMENSIONAL DRAWING





PARTS LIST

| ITEM PART NO. | DESCRIPTION | QTY. | ITEM PART NO. | DESCRIPTION | QTY. | ITEM PART NO. | DESCRIPTION | QTY. |
|---------------|------------------------------|------|---------------|------------------------------|------|---------------|-------------------------------------|------|
| 1. | 47120841 Manifold | 1 | 21. | 47021435 Crankshaft | | 41. | 90164800 Seal, Oil | 2 |
| 2. | 99320600 Screw, M8 x 70 | 8 | 22. | 90055700 Ring, Snap, M12 | 6 | 42. | 90361600 O-Ring, 1.364 x .070 | 3 |
| 3. | 96702000 Washer, M8.4 | 8 | 23. | 91489000 Key | 1 | 43. | 47080970 Retainer, Seal, Low Press. | 3 |
| 4. | 90384100 O-Ring, .674 x .103 | 6 | 24. | 97738000 Pin, Wrist | 3 | 44. | 90270500 Seal, High Pressure | 3 |
| 5. | 36200366 Seat, Valve | 6 | 25. | 47050454 Guide, Piston | 3 | 45. | 47100051 Ring, Head, M20 | 3 |
| 6. | 36200176 Plate, Valve | 6 | 26. | 47030001 Rod, Connecting | 3 | 46. | 47216970 Ring, Intermed., M20 | 3 |
| 7. | 94737600 Spring | 6 | 27. | 99183700 Screw, M6 x 14 | 5 | 47. | 90270400 Ring, Restop | 3 |
| 8. | 36200251 Guide, Valve | 6 | 28. | 47160322 Cover, Crankcase | | 48. | 47200074 Rail, Pump | 2 |
| 9. | 90384700 O-Ring, .797 x .103 | 6 | 29. | 97596800 Oil Indicator | 1 | 49. | 99364400 Screw, M10 x 18 | 4 |
| 10. | 98222000 Cap, M24 | 6 | 30. | 98204100 Cap | 1 | 50. | 96710600 Washer, M10.2 | 4 |
| 11. | 36703201 Valve Assembly | 6 | 31. | 90358500 O-Ring, .426 x .070 | 4 | 51. | 98217600 Cap | 1 |
| 12. | 99303900 Screw, M8 x 16 | 8 | 32. | 99309900 Screw, M8 x 35 | 6 | 52. | 96751400 Washer, M21.5 | 1 |
| 13. | 47150122 Cover, Crankcase | 1 | 33. | 96701400 Washer, M8.4 | 6 | 53. | 98210000 Cap | 1 |
| 14. | 90391300 O-Ring, 2.68 x .103 | 2 | 34. | 96728600 Washer, M14 | 3 | 54. | 96738000 Washer, M17.5 | 1 |
| 15. | 91837500 Bearing, Roller | 2 | 35. | 47040409 Plunger, (20 mm) | 3 | 56. | 90269400 Seal, Low Pressure | 3 |
| 16. | 90162500 Seal, Oil | 3 | 36. | 90506700 Ring, Back-up | 3 | | | |
| 17. | 90912600 Bushing | 3 | 37. | 96728000 Washer, M14 | 3 | Optional | | |
| 18. | 47010422 Crankcase | 1 | 38. | 47219566 Screw, Plunger | 3 | 190160 | Rail & Coupler Kit (310) | 1 |
| 19. | 98210600 Oil Dip Stick | 1 | 39. | 47150022 Cover, Crankcase | 2 | 190161 | Rail & Coupler Kit (530) | 1 |
| 20. | 47211984 Cover, Gasket | 1 | 40. | 97567800 Shim | 2 | | | |

REPAIR KITS

| KIT NO. | K01 | K02 | K03 | K04 | K06 | K07 | K71 | K969 | K9101A | K910 |
|--------------------------------------|-----|-----|-----|-------|--------------------|-----|--------|-----------|------------------------|-----------|
| ITEM NO.s INCLUDED IN KIT | 11 | 16 | 41 | 9, 10 | 31, 34, 36, 37, 38 | 45 | 46, 47 | 44,47, 56 | 42,43,44, 45,46,47, 56 | 42,43, 56 |
| NUMBER OF ASSEMBLIES IN KIT | 6 | 3 | 2 | 6 | 3 | 6 | 3 | 3 | 1 | 3 |
| NUMBER OF CYLINDERS KIT WILL SERVICE | 6 | 3 | - | 3 | 3 | 3 | 3 | 3 | 1 | 3 |

TORQUE SPECS*

| Position | Ft.-lbs. |
|----------|----------|
| 2 | 22.1 |
| 10 | 73.7 |
| 12 | 14.7 |
| 27 | 7.3 |
| 29 | 13.2 |
| 30 | 14.7 |
| 32 | 14.7 |
| 38 | 14.7 |
| 49 | 29.4 |
| 51 | 29.4 |

*Decrease torque by 20% if threads are lubricated.